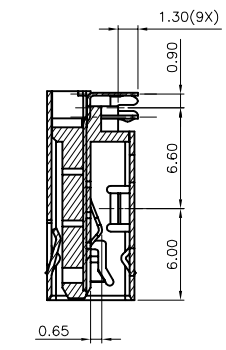
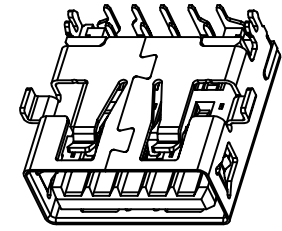
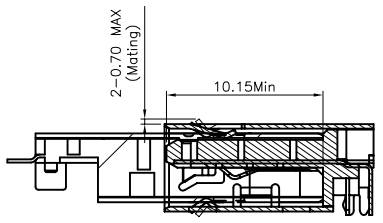


MATTING PLUE AFTER

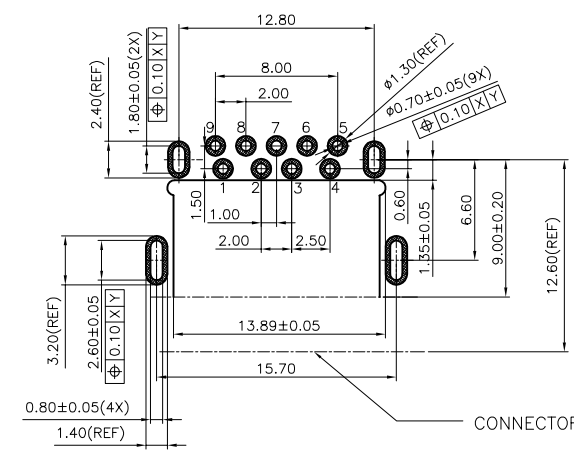
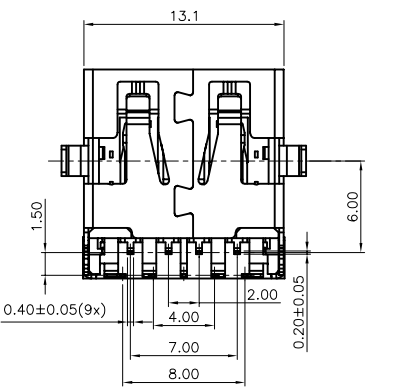
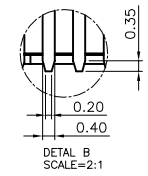
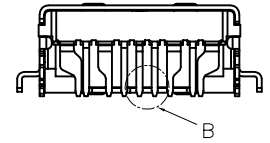
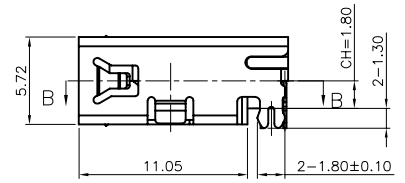
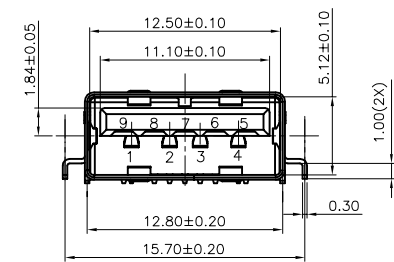


SECTION A-A



- NOTES:
- MATERIAL:
 - HOUSING: SEE TABLE
 - CONTACTS: SEE TABLE
 - SHELL: SEE TABLE
 - FINISH:
 - CONTACT: SEE TABLE
 - SHELL: SEE TABLE
 - THE CONNECTOR IS ROHS COMPLIANT.
 - SPEC PLS. REFER TO PS-50925-XXXX-XXX
 - PACKING REFER TO 53935-XXXX-XX-TRP
 - P/N: 53935-00902-001

CKTS	COLOR:
	001: BLACK
 - PACKING:
 - TAPE&REEL
 - PLATING:
 - GOLD FLASH ON CONTACT AREA
 - 30u" GOLD PLATED ON CONTACT AREA



CONNECTOR FRONT EDGE

TOLERANCE: ±0.05, THICKNESS: 1.2mm
RECOMMENDED PCB LAYOUT

Pin #	SIGNAL NAME	DESCRIPTION	MATING SEQUENCE
1	VBUS	POWER	SECOND
2	D-	USB 2.0 DIFFERENTIAL PAIR	THIRD
3	D+		
4	GND	GROUND FOR POWER RETURN	SECOND
5	StdA_SSRX-	SUPERSPEED RECEIVER DIFFERENTIAL PAIR	LAST
6	StdA_SSRX+		
7	GND_DRAIN	GROUND FOR SIGNAL RETURN	
8	StdA_SSTX-	SUPERSPEED TRANSMITTER DIFFERENTIAL PAIR	
9	StdA_SSTX+		
Shell	Shield	CONNECTOR METAL SHELL	FRIST

No.	Part Name	Q'TY	Material	Finish
1	HOUSING	1	HIGH TEMP. THERMOPLASTIC	UL94 V-0,
2	SHELL	1	STAINLESS	50μ" MIN. NICKEL PLATING
3	TERMINAL	9	COPPER ALLOY	50μ" MIN. UNDER PLATED OVER ALL CONTACT AREA; REFER TO PART NUMBER SOLDER TAILS:100μ" MIN. MATTE TIN PLATED

一般公差 TOLERANCES X +0.5 .XX ±0.15 X ±0.25 .XXX ±0.1 ANGLES ±2°		宏致電子股份有限公司 Aces Electronics Co.,Ltd.	
檢驗尺寸標示 SYMBOLS Ⓢ Ⓣ INDICATE CLASSIFICATION DIMENSION Ⓢ MARK IS CRITICAL DIM. Ⓣ MARK IS MAJOR DIM.	品名 (TITLE) USB3.0 STD SINK A TYPE T/H R/A CH=1.80mm	製圖 (DR) 14'/07/31 ERIC 審核 (CHKD) AMY	核准 (APPD) FI
表面處理 (FINISH)	圖號 (DWG NO.) 53935-XXXX-XXX	比例 (SCALE) -:-	單位 (UNITS) mm
張數 (SHEET) 1 OF 1		尺寸 A4	REV 0